

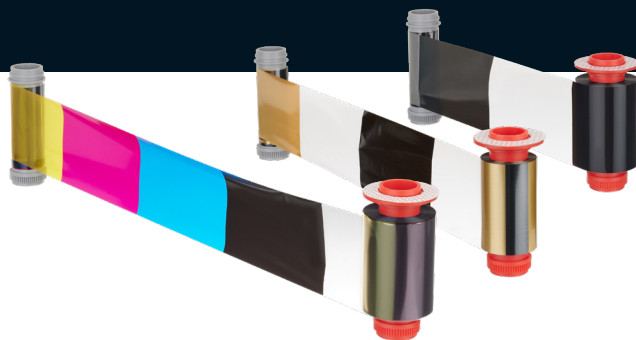
Empowering trusted credential issuance with high quality printing solutions



About DISK Global

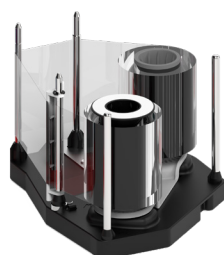
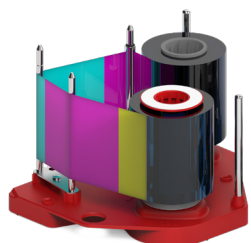
Founded in 2008, DISK Global is focused on the production of high-quality dye sublimation ribbons for secure ID card printer OEMs globally.

DISK Global produces ink ribbons for direct-to-card and retransfer printers that are deployed across a wide range of credential issuance markets including secure citizen IDs, student IDs, EMV-compliant debit/credit card issuance and corporate IDs.



Direct to card printer ribbons

DISK color ribbons provide up to 16.7 million vivid colors from the Yellow (Y), Magenta (M) and Cyan (C) panels, combined with a thermal transfer Black (K) panel that ensures crisp and sharp text and barcode printing. When used with direct to card printers, a varnish type overlay panel (O) protects the printed information and ensures durability throughout the card's lifetime.



Retransfer printer ribbons

In the retransfer printing process the Y, M, C and K color panels are printed onto a clear retransfer film that is subsequently transferred onto the card surface.

As a result consistent print results can be achieved with many different cards types including PC, PET and smart cards with an embedded chip and irregular surfaces.

Color panels are often combined with security panels that can provide a pearlescent security watermark image or a UV printed image - making these ribbons ideal for decentralized secure government ID issuance programs.

Secure printing solutions

Manufacturing innovation

Trusted quality



The DISK Global team look forward to working with you.

disk-global.com

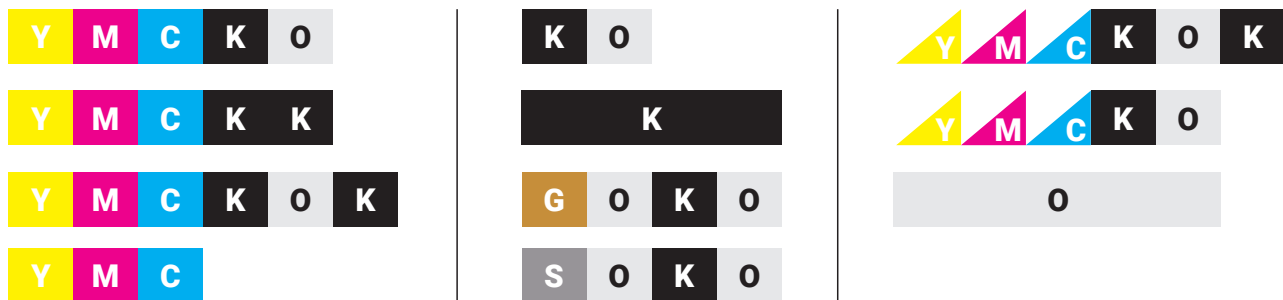
Manufacturing excellence in secure printing technologies



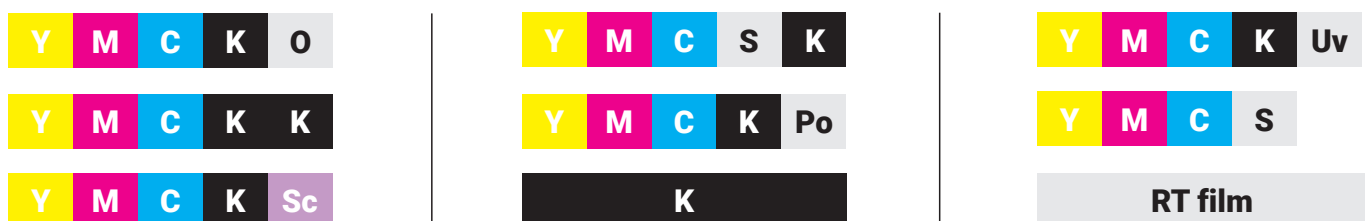
Ribbon formats

DISK global offers a wide range of ribbon formats from single color monochrome only to full color ribbons with additional specialist panels for security. Half panel formats are also available, offering a cost-effective solution for printing a color portrait in a selected area of the card.

For direct to card printers



For retransfer printers

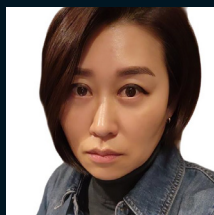


Key contacts



Ryan Lee
Head of Sales

r.lee@disk-global.com



Kimberly Yang
Project Manager

k.yang@disk-global.com

For further information contact: info@disk-global.com

disk-global.com